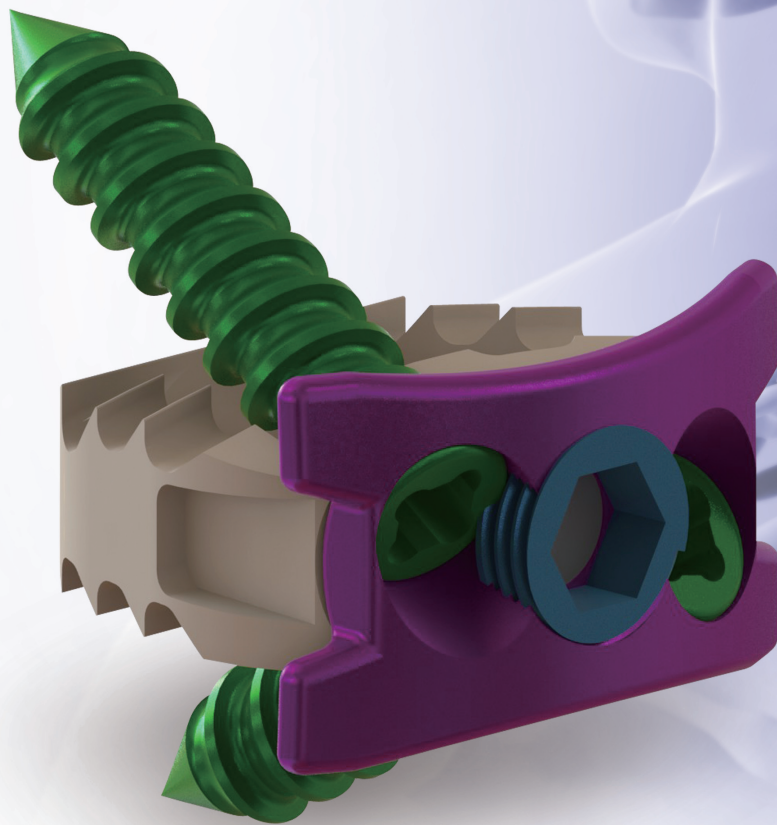


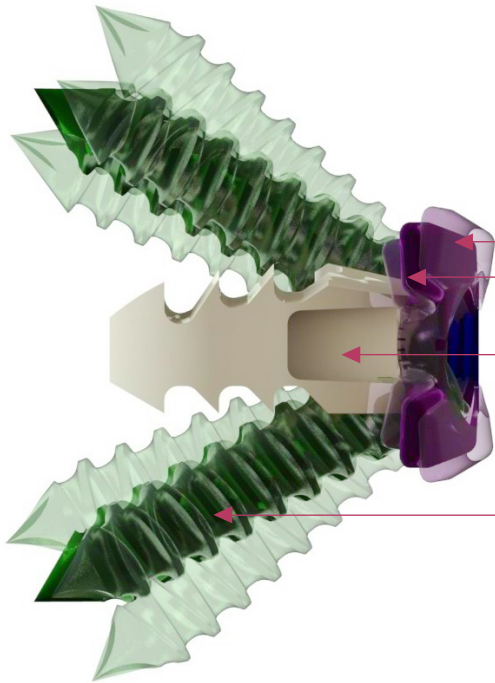
PERFECT-C[®]

Cervical Fusion System



PERFECT-C®

Cervical Fusion System



Features & Benefits

- Ultra Thin Plate
- Safety Locking Device for Screw Pull-out
- Optimal Bone Contact
- Various Screw Angle

Lordosis
Preservation

Reducing Stress
Shielding

Anatomical
Design

Optimal Fixation
(Cortical Fixation)

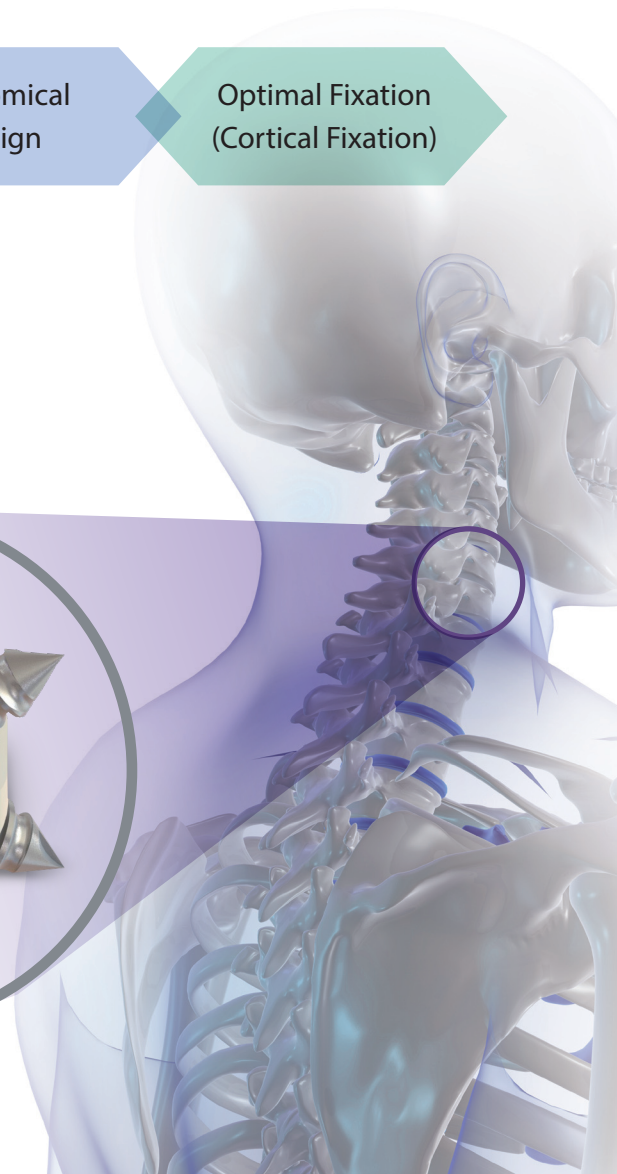
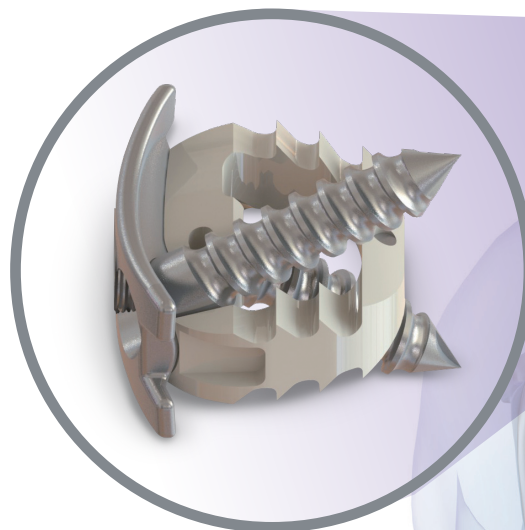
Indication

The PERFECT-C implant is a stand-alone anterior cervical interbody fusion device indicated for;

- DDD(Degenerative Disc Disease)
- Disc Herniation
- Myelopathy
- Radiculopathy
- Spinal canal stenosis

Contraindications

- Osteoporosis
- Spinal Fractures
- Spinal Tumor
- Systemic infection of allergy



Total reliability on products comes from exhaustive inspection and thorough such analysis as mechanical and physical properties over the whole processes.

Implant specification

No.	Model	H1(mm)	H2(mm)	W1(mm)	W2(mm)	L(mm)
1	CF051412	5.5	09	14	15	13.5
2	CF061412	6.5	09	14	15	13.5
3	CF071412	7.5	11	14	15	13.5
4	CF081412	8.5	11	14	15	13.5
5	CF051614	5.5	09	16	17	15
6	CF061614	6.5	09	16	17	15
7	CF071614	7.5	11	16	17	15
8	CF081614	8.5	11	16	17	15

L	1.25mm		D1	D2	L
D	5mm	14	4.1mm	3.5mm	14mm
		16	4.1mm	3.5mm	16mm
		18	4.1mm	3.5mm	18mm
		14R	4.2mm	3.9mm	14mm
		16R	4.2mm	3.9mm	16mm
		18R	4.2mm	3.9mm	18mm



Instrument Specification

NAME	PART NO.	NAME	PART NO.
Retractor	SCCFI-001	Modular handle	SCCFI-020
Retractor screw 12mm	SCCFI-002	Holder	SCCFI-021
Retractor screw 14mm	SCCFI-003	Awl	SCCFI-022
Retractor screw 16mm	SCCFI-004	Drill bit 14mm	SCCFI-023
Retractor screw Driver	SCCFI-005	Drill bit 16mm	SCCFI-024
Trial 5 x 12	SCCFI-011	Drill bit 18mm	SCCFI-025
Trial 6 x 12	SCCFI-012	Screw driver	SCCFI-030
Trial 7 x 12	SCCFI-013	Final screw driver	SCCFI-031
Trial 8 x 12	SCCFI-014	Quick coupling	SCCFI-032
Trial 5 x 14	SCCFI-015	Bone packing bar	SCCFI-033
Trial 6 x 14	SCCFI-016	Bone packing block	SCCFI-034
Trial 7 x 14	SCCFI-017	Implant case	SCCFI-035
Trial 8 x 14	SCCFI-018	Container	SCCFI-036





PERFECT-C®

Cervical Fusion System



 **SeohanCare**
Leader of Implant

Address : 2F, Da-Dong, 22, Gimpo-Daero, 2918beon-Gil,
Wolgot-Myeon, Gimpo-City, Gyeonggi-Do, 415-877, Korea.

Tel : +82-31-989-5085

Fax : +82-31-989-5090

Website : <http://www.seohancare.com>

E-mail : kkh@seohancare.com